

Commonly Asked Questions:

Q: Will the osteotome lift procedure hurt?

A: Only “novocaine“ is necessary to perform an osteotome lift procedure. During the visit you will feel nothing once the area has been numbed. When the “novocaine” wears off, there may be mild discomfort. Medication will be prescribed to control any discomfort you might experience. The procedure will not cause you to miss work.

Q: How long does the procedure for an osteotome lift with implant placement procedure take?

A: The visit to perform an osteotome lift with simultaneous implant placement is approximately one hour.

Q: What is the cost of an osteotome lift procedure?

A: The cost of an osteotome lift procedure will vary with the situation. Your dentist will discuss this with you before you proceed with treatment.

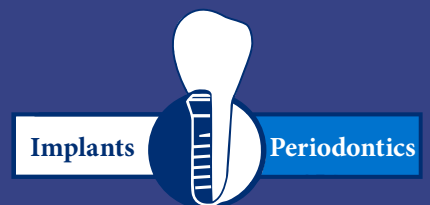
Q: How long do I have to wait after an osteotome lift procedure is performed before having the crown made?

A: The implant will be ready for a crown approximately eight to twelve weeks after its placement at the time of an osteotome lift procedure.

Q: How well does an osteotome lift procedure work?

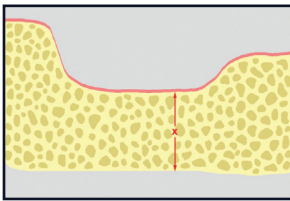
A: The osteotome lift procedure with simultaneous implant placement is highly predictable. Numerous studies report success rates of over 99%.

What is an Osteotome Lift?

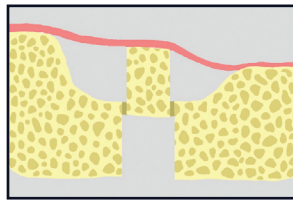


An osteotome lift is a simple procedure which lifts the sinus floor in the precise area of implant placement.

The loss of back teeth causes excessive forces to be placed on your front teeth, leading to their premature loss. Fortunately, dental implants and crowns may be placed in these back areas to re-establish necessary function and comfort.



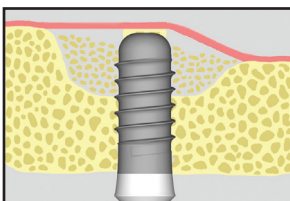
Inadequate bone is present above the floor of the sinus for proper implant placement.



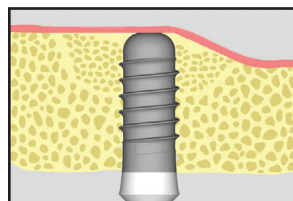
The bone above the floor of the sinus is "tapped up" in the position of planned implant placement.

The position of the sinus in the upper back areas may be too low for placement of dental implants. In the past, treatment of such an area required a sinus grafting procedure. This can often be avoided with an osteotome lift.

Osteotomes are utilized to "tap up" the bone below the floor of the sinus at the planned implant position. The implant is usually placed during the same visit.



An implant is placed in the site where the bone has been "tapped-up."

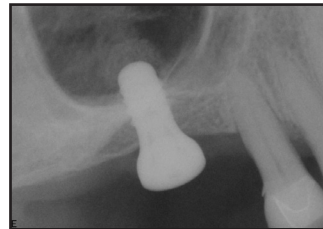


Following healing the implant is surrounded by healthy bone

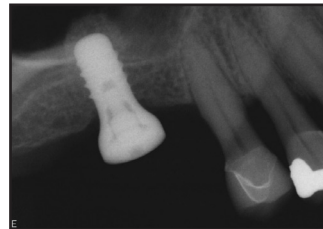
This procedure is more conservative than sinus grafting therapy, and adds minimal time to the implant placement visit.

Following healing, the tip of the implant is surrounded by a "halo" of bone which will heal to the implant. The implant is then restored with a crown.

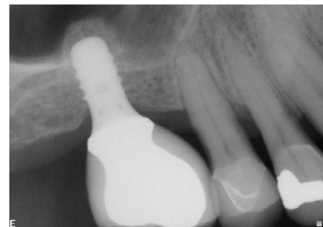
This procedure is highly predictable, and has been reported on extensively in the dental literature.



An implant has been placed at the time of an osteotome lift.



Note the "halo" of healthy bone around the tip of the implant following healing.



The implant has been restored with a single crown, and has been in function for over ten years.

An osteotome lift allows an implant to be placed in an area which would previously have required more extensive treatment.